



333 C STREET
SAN DIEGO, CA 92101

OFFICE SPACE FOR SUBLEASE

PROPERTY HIGHLIGHTS

SUITE:	210
SIZE:	3,477 SF*
RATE:	\$1.00/SF + E**
TIMING:	60 Days

**Potential expansion up to 9,999 SF*

***Teaser rate year 1 with year 2 rate between \$1.50-\$1.95 depending on terms*

CONTACT: (619) 243-1244

Jack Kirk | jack@stromcommercial.com | LIC #01905664

Mike Morgan | mike@stromcommercial.com | LIC #00988519

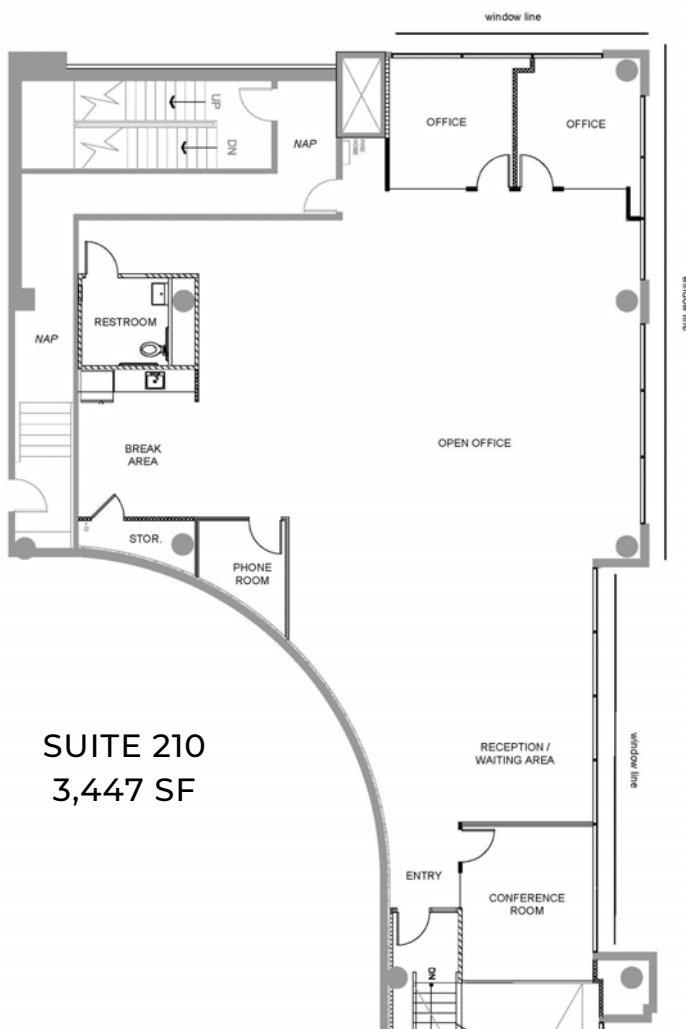


3,477 SF | \$1.00/SF + E



OFFICE FEATURES

- 2 glass lined private offices
- Open office area
- Conference/private office
- Break area
- Private restroom
- Phone/storage room
- Concrete style flooring
- High-end lighting
- HVAC throughout
- Secure building entrance
- 2nd floor office
- Secured parking in adjacent garage available
- Elevated ceilings w/ exposed ducting
- Possibility to lease up to 9,999 SF at project



333 C STREET

CREATIVE 2ND-FLOOR
OFFICE SPACE



3,477 SF | \$1.00/SF + E

LOCATION

- Close access to I-5, 8 and 163 freeways
- Walking distance to Horton Project, Gaslamp Quarter, Central Business District, and the Convention Center
- Close proximity amenities include Gaslamp restaurants and cafes, Several bus stops, 5th Avenue Trolley Station, and the Civic Center Plaza

