



7625A

# 7625 MESA COLLEGE DRIVE

San Diego, CA 92111

**Jack Kirk** | Lic #01905664  
Jack@stromcommercial.com

**Hans Strom** | Lic #01222709  
Hans@stromcommercial.com

Strom Commercial  
(619) 243-1244



# FOR LEASE | 7625 MESA COLLEGE DR



Suite A150 : 2,082 SF

## Suite A150 Summary

- Rate: \$3.00/SF + NNN\*
- Term: Negotiable
- Parking: 4.0/1,000
- First floor medical/office
- Floor to ceiling windows
- Corner unit
- Shell condition
- Ready for build-out

\*NNN includes Utilities



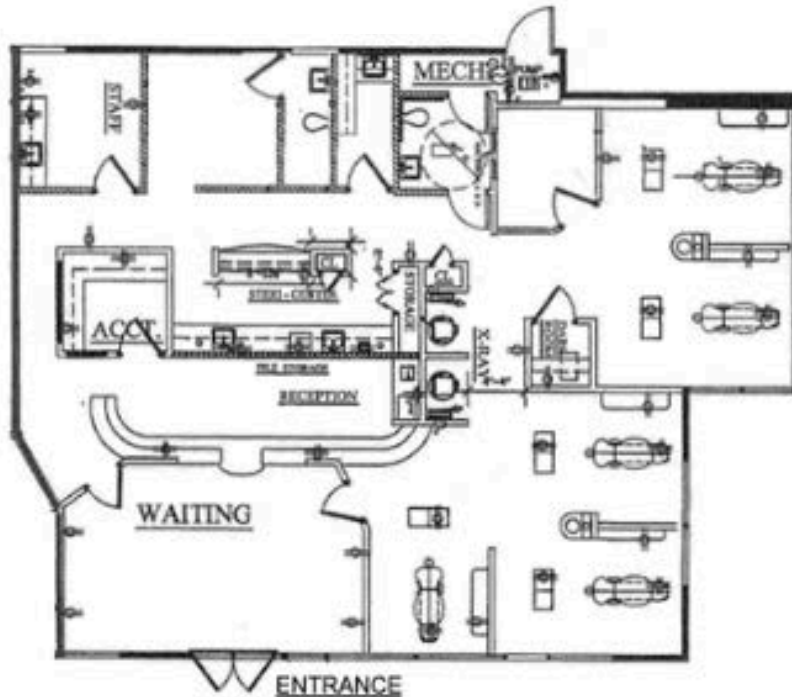
# FOR LEASE | 7625 MESA COLLEGE DR



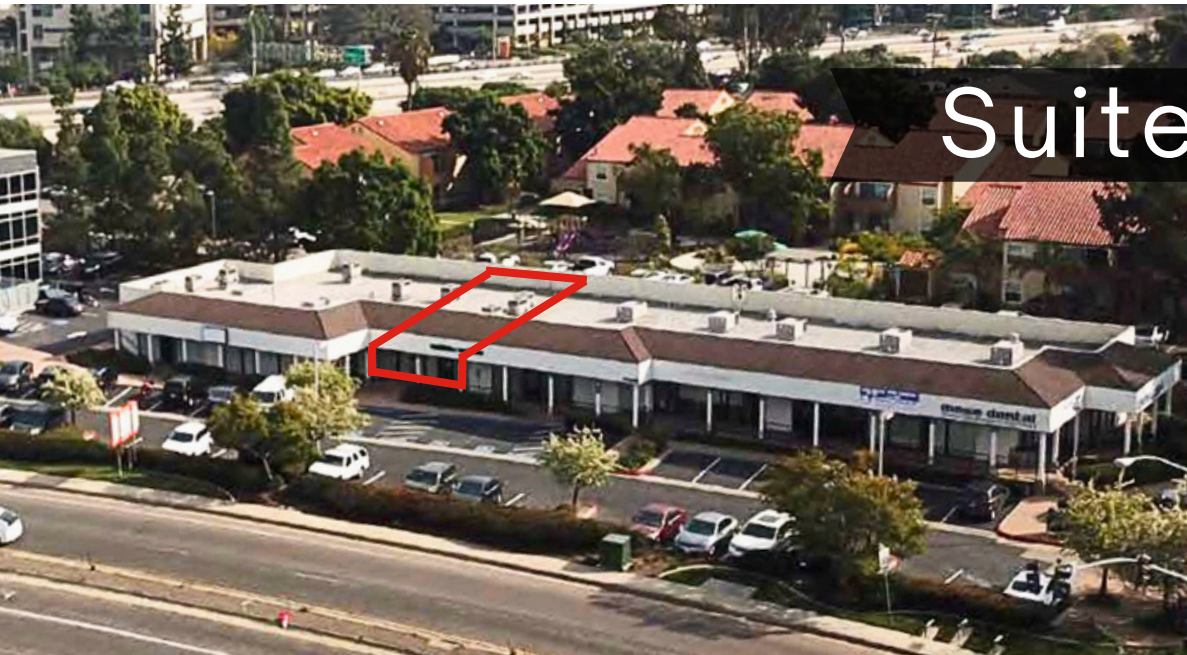
Suite B100 : 2,281 SF

## Suite B100 Summary

- Rate: \$2.25/SF + NNN
- Term: Negotiable
- Second generation dental space
- Reception area with waiting room
- Multiple private offices and dental stations
- Lab area
- Administrative office



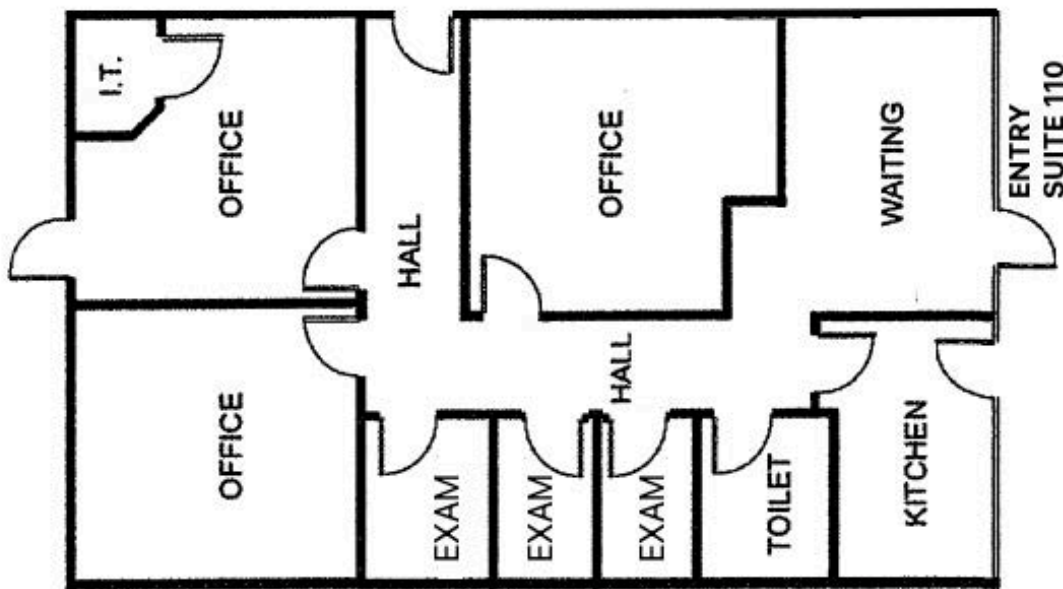
# FOR LEASE | 7625 MESA COLLEGE DR



Suite B110 : 1,500 SF

## Suite B110 Summary

- Rate: \$2.25/SF + NNN
- Term: Negotiable
- First floor office/medical space
- 3 larger private offices/conference rooms
- 3 exam rooms
- Kitchen/break area
- Private restroom



# FOR LEASE | 7625 MESA COLLEGE DR

## BUILDING OVERVIEW



### PREMIER MEDICAL INSTITUTE

- Two building project with high visibility along Mesa College Drive
- Entry points along Mesa College Drive and Linda Vista Road



### CENTRALLY LOCATED

- Minutes from Downtown San Diego, Pacific Beach, Mira Mesa and La Jolla Village
- Walking distance to various restaurants
- Close to the 163, 805, 8, and 5 Freeways



### LOCATION

- Located in Central Kearny Mesa
- Adjacent to Sharp Memorial, Rady Children's Hospital and Sharp Mary Birch Hospital



### CONTACT

- Jack Kirk at [Jack@stromcommercial.com](mailto:Jack@stromcommercial.com) | LIC #01905664
- Hans Strom at [Hans@stromcommercial.com](mailto:Hans@stromcommercial.com) | LIC #1222709

