



7625 MESA COLLEGE DRIVE

San Diego, CA 92111

Jack Kirk | Lic #01905664
Jack@stromcommercial.com

Hans Strom | Lic #01222709
Hans@stromcommercial.com

Strom Commercial
(619) 243-1244



FOR LEASE | 7625 MESA COLLEGE DR



Suite A150 : 2,082 SF

Suite A150 Summary

- Rate: Negotiable
- Term: Negotiable
- Parking: 4.0/1,000
- First floor medical/office
- Floor to ceiling windows
- Corner unit
- Shell condition
- Ready for build-out

*NNN includes Utilities



FOR LEASE | 7625 MESA COLLEGE DR

Suite A310 : 1,245 SF



Suite A310 Summary

- Rate: \$3.50/SF + NNN*
- Term: Negotiable
- 3 dedicated exam rooms/private offices
- 5 part-time exam rooms
- Floor to ceiling windows
- High-end medical space
- Access to 3rd floor break room and onsite medical equipment including an X-ray & MRI machine.

*NNN includes Utilities



FOR LEASE | 7625 MESA COLLEGE DR



Suite A315 : 1,816 SF

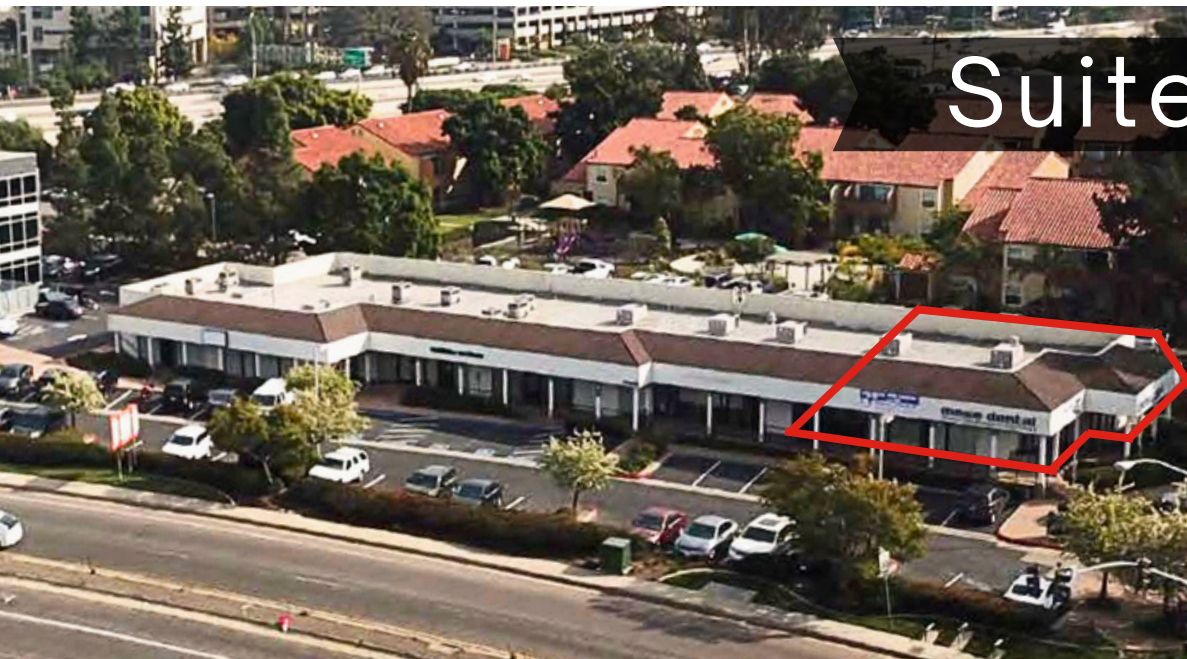
Suite A315 Summary

- Rate: \$3.50/SF + NNN*
- Term: Negotiable
- 3 dedicated exam rooms/private offices
- 4 part-time exam rooms
- Floor to ceiling windows
- High-end medical space
- Access to 3rd floor break room and onsite medical equipment including an X-ray & MRI machine.

*NNN includes Utilities



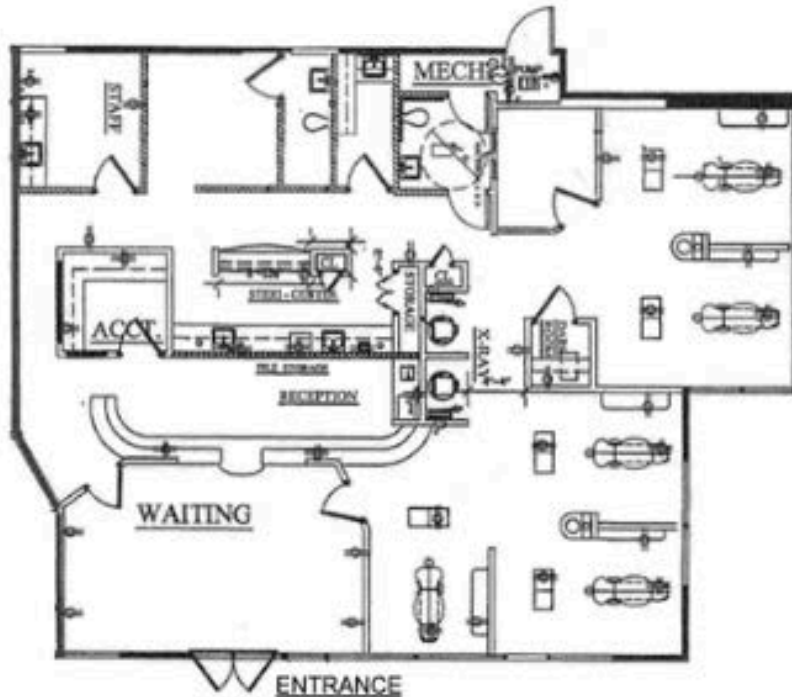
FOR LEASE | 7625 MESA COLLEGE DR



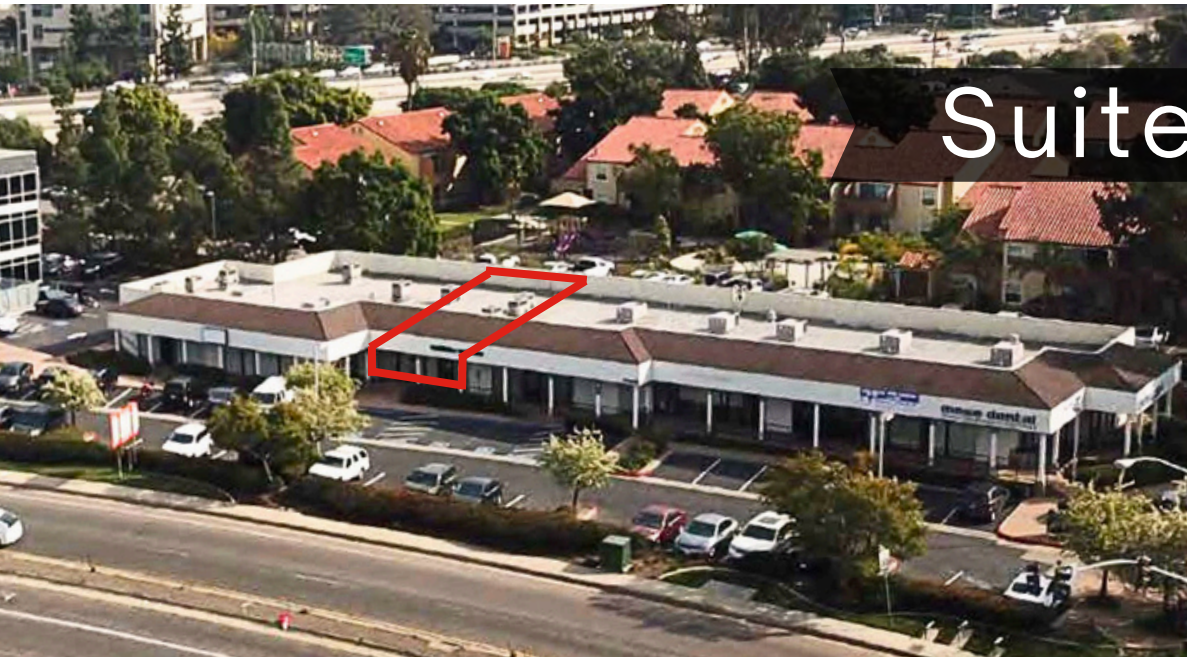
Suite B100 : 2,281 SF

Suite B100 Summary

- Rate: \$2.25/SF + NNN
- Term: Negotiable
- Second generation dental space
- Reception area with waiting room
- Multiple private offices and dental stations
- Lab area
- Administrative office



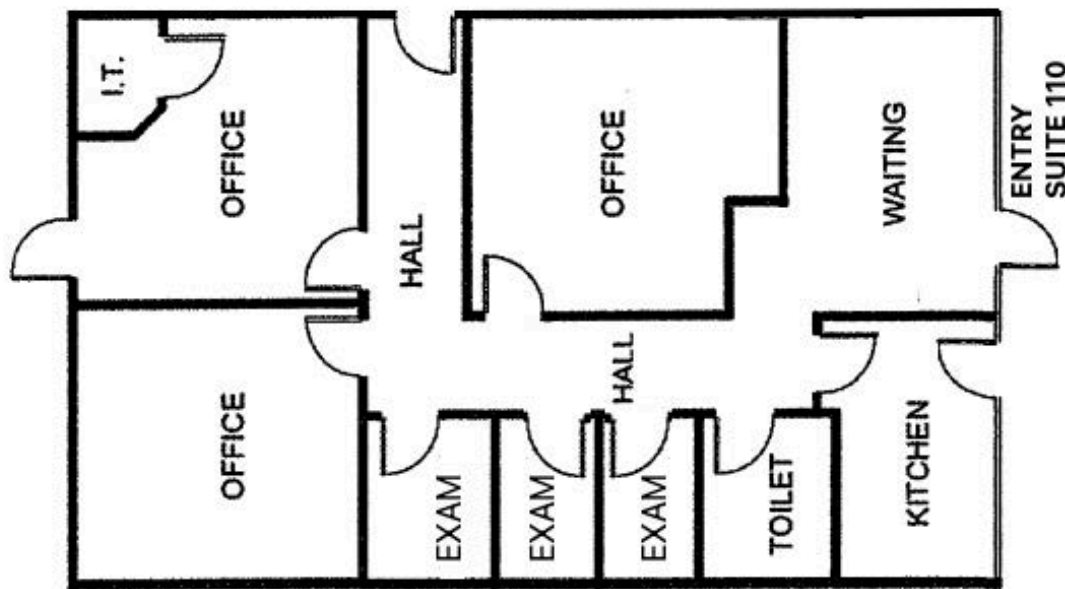
FOR LEASE | 7625 MESA COLLEGE DR



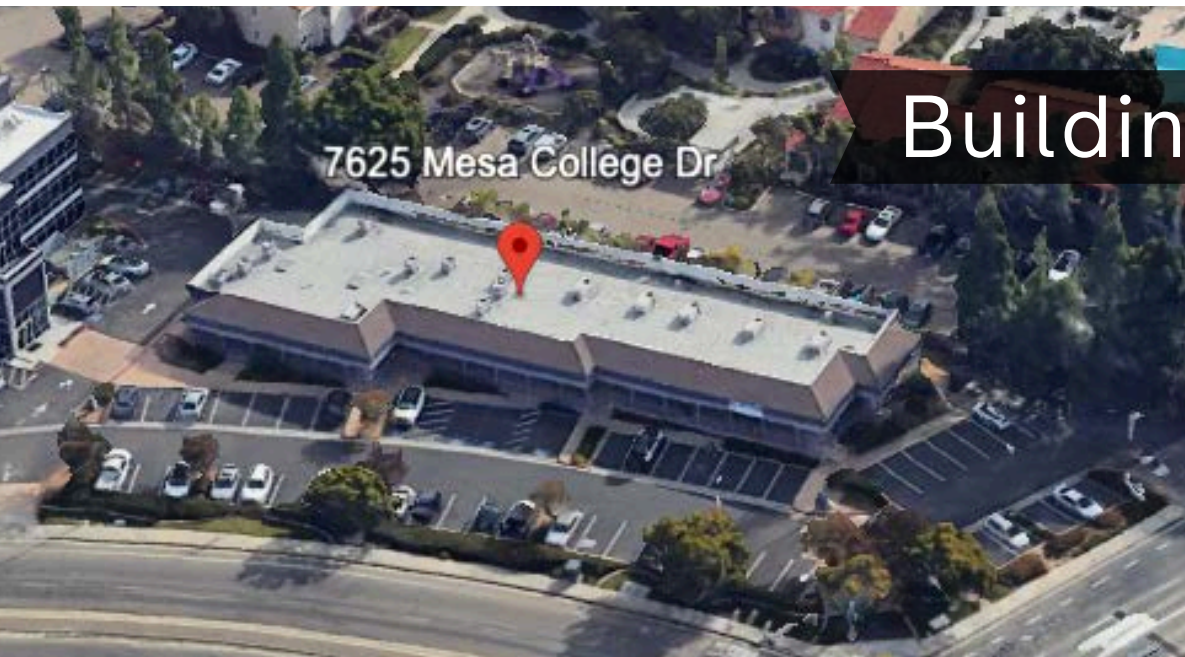
Suite B110 : 1,500 SF

Suite B110 Summary

- Rate: \$2.25/SF + NNN
- Term: Negotiable
- First floor office/medical space
- 3 larger private offices/conference rooms
- 3 exam rooms
- Kitchen/break area
- Private restroom



FOR LEASE | 7625 MESA COLLEGE DR



Building B : 3,000-9,281 SF

Building B Summary

- Rate: Negotiable
- Entire building opportunity
- Office/medical spaces
- Inquire for additional details

CONTACT

Jack Kirk | Lic #01905664
Jack@stromcommercial.com

Hans Strom | Lic #01222709
Hans@stromcommercial.com

Strom Commercial
(619) 243-1244



FOR LEASE | 7625 MESA COLLEGE DR

BUILDING OVERVIEW



PREMIER MEDICAL INSTITUTE

- Two building project with high visibility along Mesa College Drive
- Entry points along Mesa College Drive and Linda Vista Road



CENTRALLY LOCATED

- Minutes from Downtown San Diego, Pacific Beach, Mira Mesa and La Jolla Village
- Walking distance to various restaurants
- Close to the 163, 805, 8, and 5 Freeways



LOCATION

- Located in Central Kearny Mesa
- Adjacent to Sharp Memorial, Rady Children's Hospital and Sharp Mary Birch Hospital



CONTACT

- Jack Kirk at Jack@stromcommercial.com | LIC #01905664
- Hans Strom at Hans@stromcommercial.com | LIC #1222709

