



**345 15TH STREET**  
SAN DIEGO, CA 92101

**AVAILABLE NOW IN  
EAST VILLAGE**

**OFFICE SPACE FOR LEASE**

**PROPERTY HIGHLIGHTS:**

---

**SIZE: ±2,500-5,000 SF**

**RATE: \$2.25/SF + ELEC. & JAN.**

**CONTACT:**

Mike Morgan | [mike@stromcommercial.com](mailto:mike@stromcommercial.com) | LIC #00988519

Jack Kirk | [jack@stromcommercial.com](mailto:jack@stromcommercial.com) | LIC #01905664

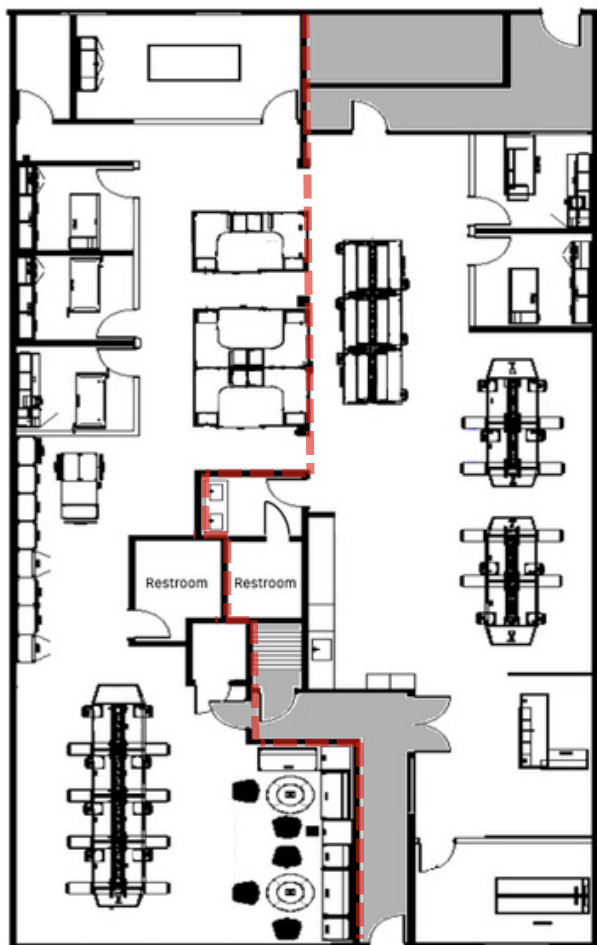


±2,500-5,000 SF | \$2.25/SF + E&J



## OFFICE FEATURES

- 6 onsite parking spaces
- Reception area
- Multiple open office areas
- 5 glass lined offices
- Open break area
- 2 glass lined conference rooms w/ natural light
- 2 private restrooms
- Onsite shower
- Wide plank hardwood style flooring
- High-end professional lighting throughout
- Elevated ceilings with exposed ducting
- Cabinetry & storage space
- Space divisible to approx. 2,500 sqft



# 345 15TH STREET

CREATIVE OFFICE SPACE  
FOR LEASE



STROM | COMMERCIAL

±2,500-5,000 SF | \$2.25/SF + E&J

## LOCATION

- Two blocks to I-5 freeway
- Walking distance to Petco Park, Basic Pizza, Copa Vida Coffee, Mission Brewery, The BXNG Club, Fault Line Park, The Mission Cafe, and the Convention Center
- Close walk to Gaslamp and East Village restaurants, shops, and amenities

