



FOR LEASE
629 J ST

DOWNTOWN SAN DIEGO | 92101

SUITE 203 & SUITE 204
1,100-3,650 SF SECOND FLOOR
OFFICE SPACE
\$2.50-\$2.55 PSF + ELECTRIC

STROMCOMMERCIAL.COM | (619)243-1244

629 J ST | SUITE 203

DOWNTOWN CREATIVE OFFICE SPACE
3,650 SF

\$2.50 PSF + ELECTRIC

HIGHLIGHTS

THREE PRIVATE OFFICES

CONFERENCE ROOM

TWO KITCHENS/BREAK AREAS

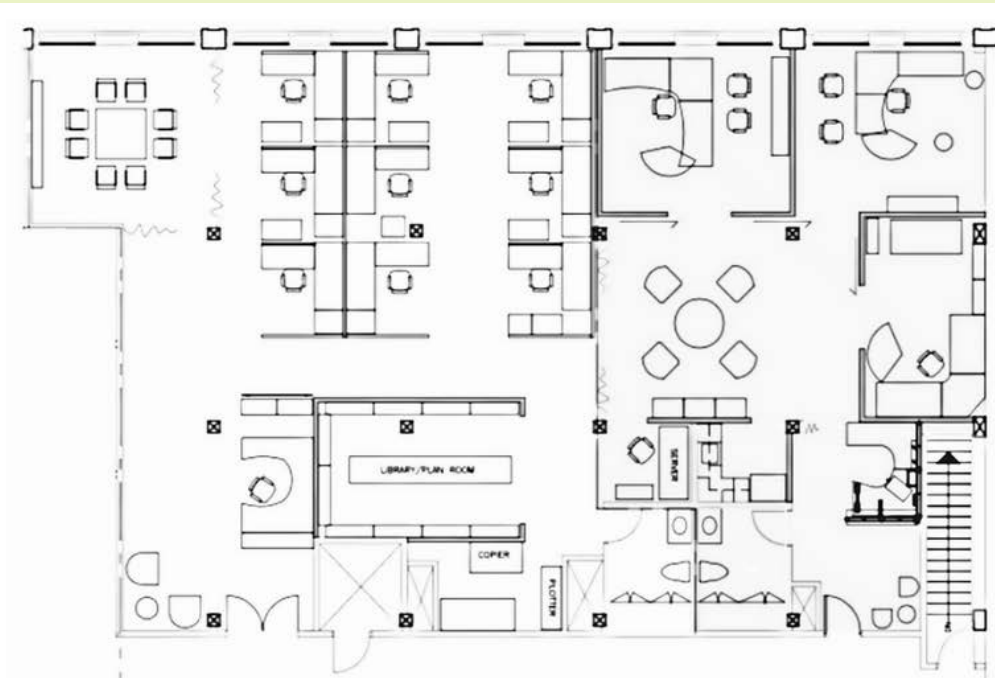
RECEPTION & WAITING AREA

FEATURES

RICH HARDWOOD FLOORS

10' CEILINGS & OPERABLE WINDOWS

FIVE PARKING SPOTS AVAILABLE



629 J ST | SUITE 204

DOWNTOWN CREATIVE OFFICE SPACE
1,100 SF

\$2.55 PSF + ELECTRIC

HIGHLIGHTS

CORNER UNIT WITH WINDOW LINE

OPEN LAYOUT

KITCHEN/BREAK AREA

FEATURES

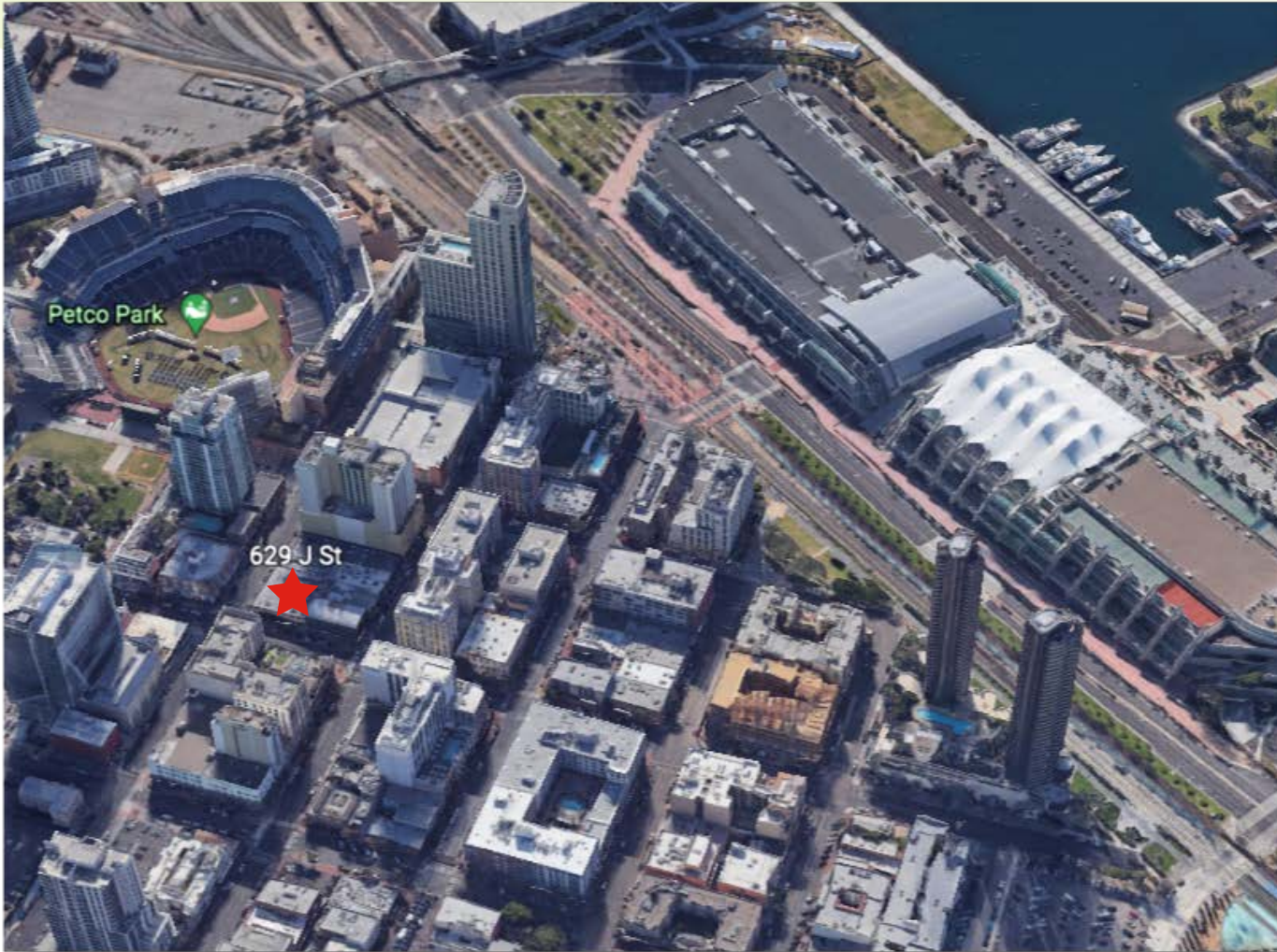
RICH HARDWOOD FLOORS

10' CEILINGS & OPERABLE WINDOWS

OPPORTUNITY FOR PARKING



629 J ST |



LOCATION

ONE BLOCK FROM PETCO PARK, AND CLOSE PROXIMITY TO SAN DIEGO CONVENTION CENTER, AND THE RADY BAND SHELL.

WALK SCORE OF 98 -

LOCATED IN THE HEART OF THE GASLAMP QUARTER, 629 J ST IS WITHIN WALKING DISTANCE OF THE FINEST RESTAURANTS, SHOPS AND VENUES IN THE CITY.

CONTACT

JORDAN WILLIAMS | LIC#01717714
JORDAN@STROMCOMMERCIAL.COM

STROMCOMMERCIAL.COM
(619)243-1244

