

624 BROADWAY | SAN DIEGO, CA 92101

FLETCHER OFFICE LOFTS

1,145 - 5,392 SF OF
CREATIVE OFFICE SPACE
AVAILABLE

PROPERTY HIGHLIGHTS

- Creative office spaces, centrally located in close proximity to the Gaslamp District and Financial District
- Onsite parking available at an additional cost
- Hardwood floors, exposed brick & HVAC, and operable windows



SUITE 301



SIZE: ± 1,164 SF

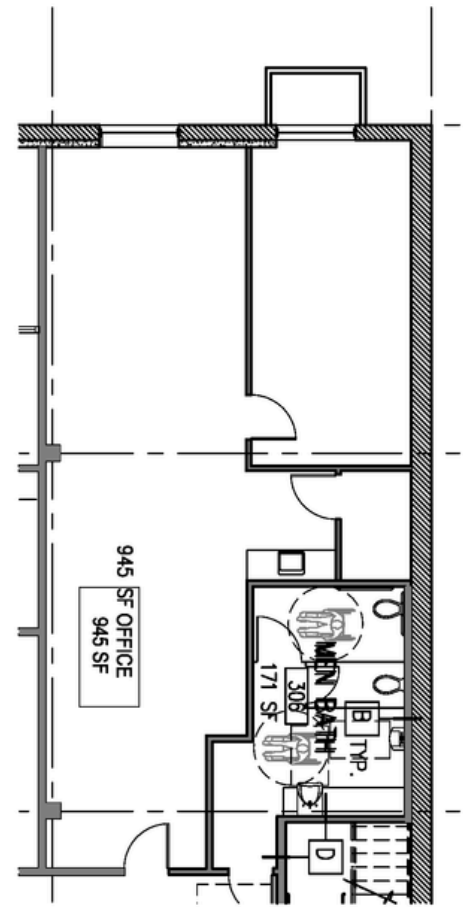


RATE: \$2.25/SF



SUITE FEATURES:

- Break room area with kitchen
- Exposed HVAC
- Conference room



We obtained the information above from sources we believe to be reliable. However, we have not verified its accuracy and make no guarantee, warranty or representation about it. It is submitted subject to the possibility of errors, omissions, change of price, rental or other conditions, prior sale, lease or financing or withdrawal without notice. We include projections, opinions, assumptions or estimates for example only, and they may not represent current or future performance of the property. You and your tax and legal advisors should conduct your own investigation of the property and transaction.



SUITE 302



SIZE: ± 5,392 SF



RATE: \$2.45 /SF

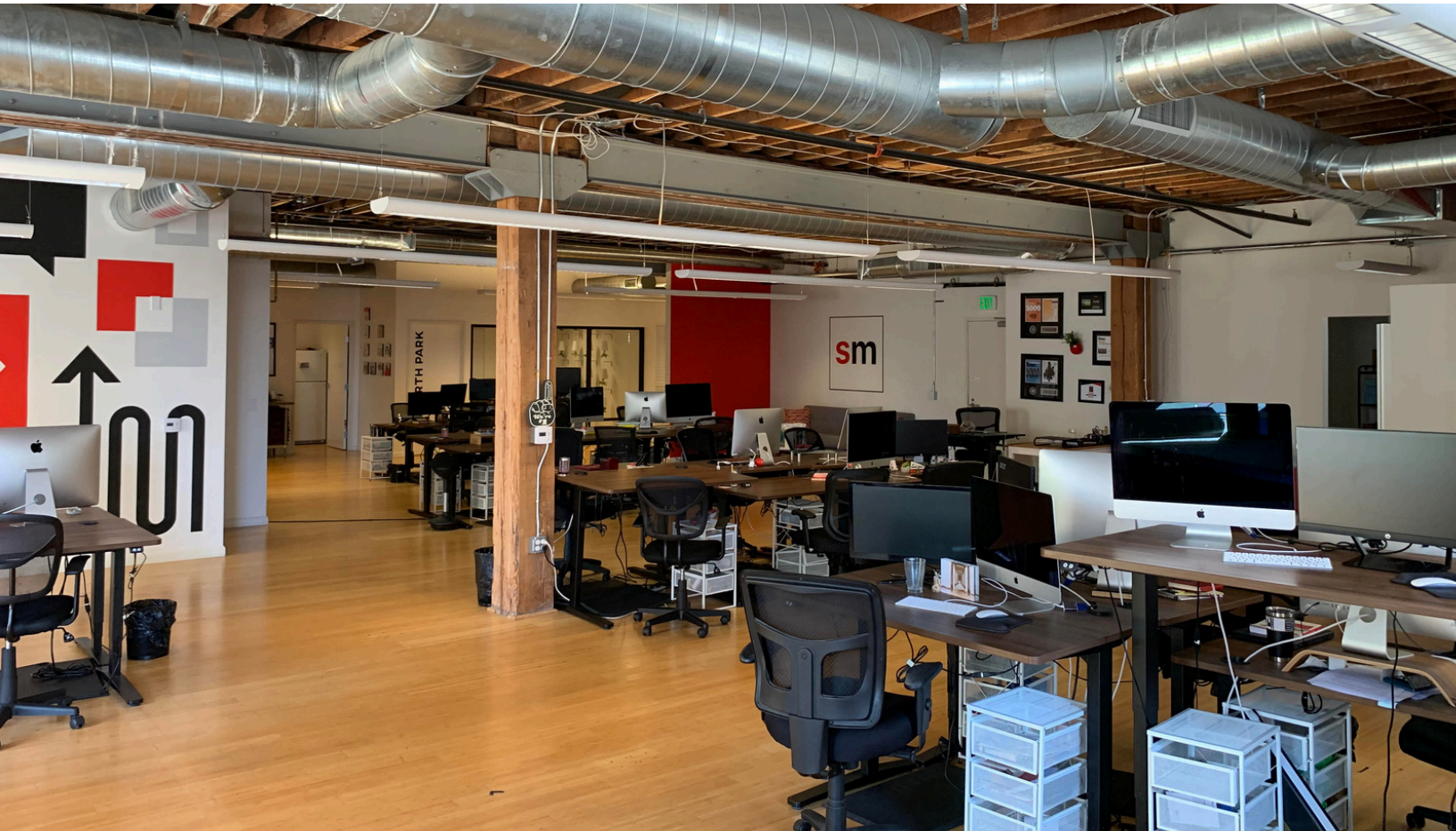
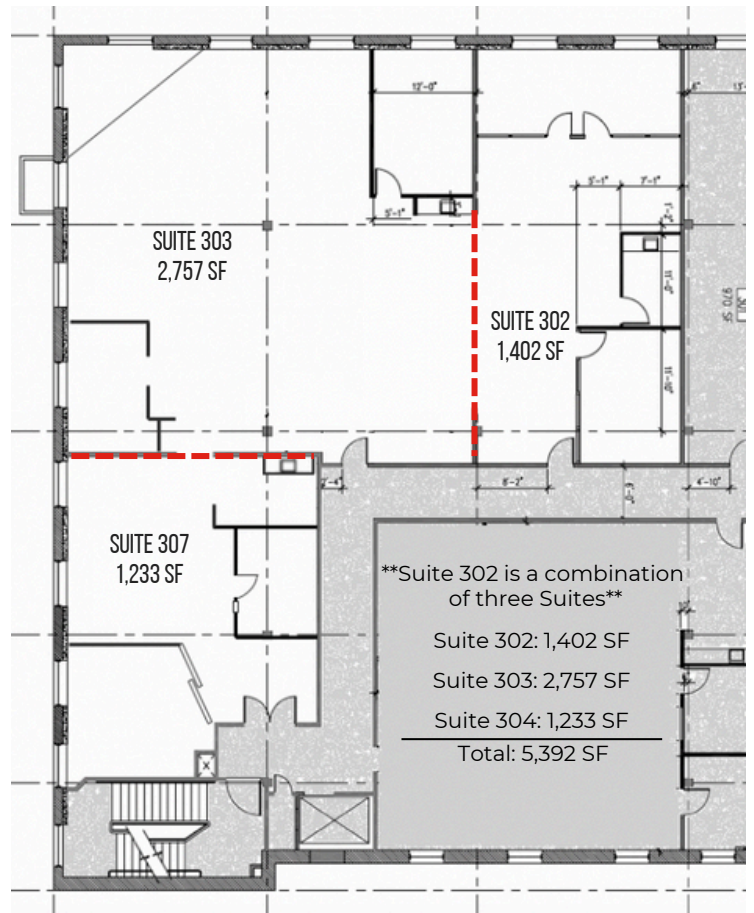


SUITE FEATURES:

Break room area

Exposed HVAC

Conference room



We obtained the information above from sources we believe to be reliable. However, we have not verified its accuracy and make no guarantee, warranty or representation about it. It is submitted subject to the possibility of errors, omissions, change of price, rental or other conditions, prior sale, lease or financing or withdrawal without notice. We include projections, opinions, assumptions or estimates for example only, and they may not represent current or future performance of the property. You and your tax and legal advisors should conduct your own investigation of the property and transaction.



SUITE 401



SIZE: ± 2,536 SF



RATE: \$2.45 /SF



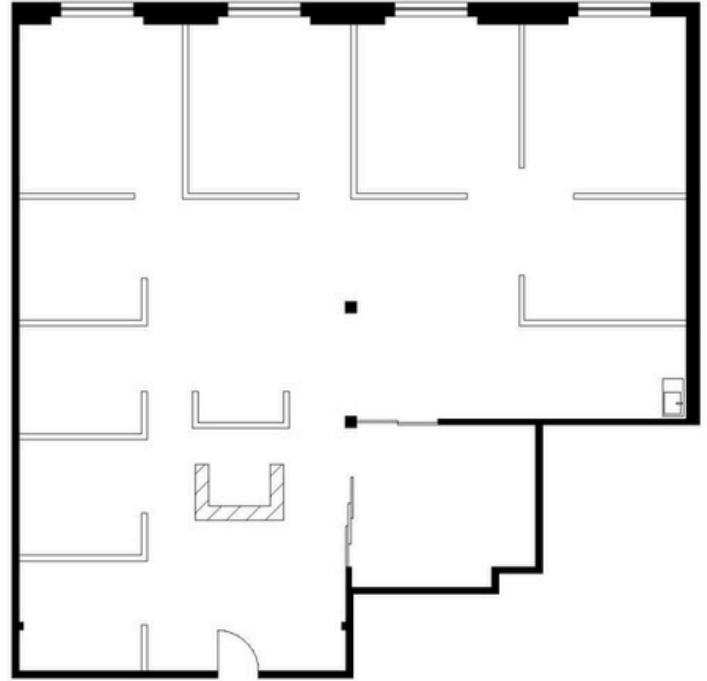
SUITE FEATURES:

Wet bar

9 built-in workstations

Reception area

Conference room



We obtained the information above from sources we believe to be reliable. However, we have not verified its accuracy and make no guarantee, warranty or representation about it. It is submitted subject to the possibility of errors, omissions, change of price, rental or other conditions, prior sale, lease or financing or withdrawal without notice. We include projections, opinions, assumptions or estimates for example only, and they may not represent current or future performance of the property. You and your tax and legal advisors should conduct your own investigation of the property and transaction.



SUITE 406



SIZE: ± 1,145 SF



RATE: \$1.95 /SF

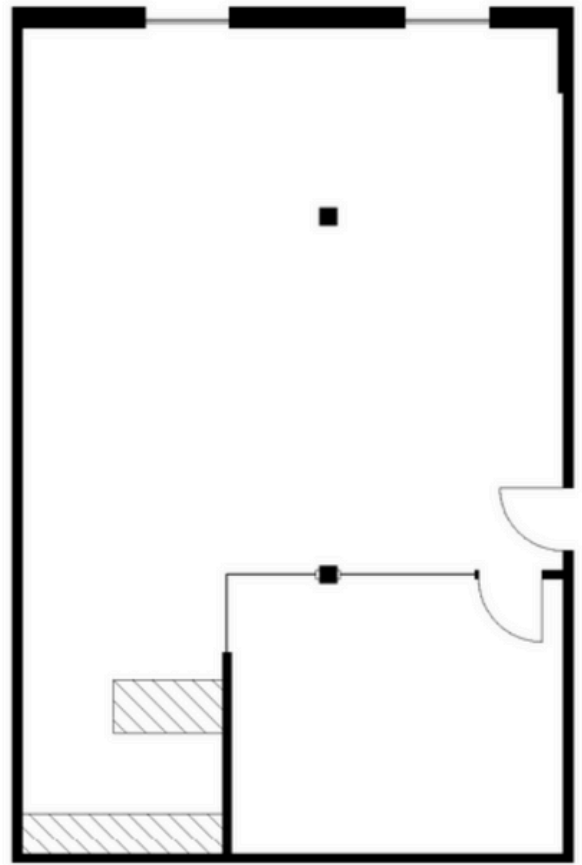


SUITE FEATURES:

Large wet bar

Open work area

Conference room



We obtained the information above from sources we believe to be reliable. However, we have not verified its accuracy and make no guarantee, warranty or representation about it. It is submitted subject to the possibility of errors, omissions, change of price, rental or other conditions, prior sale, lease or financing or withdrawal without notice. We include projections, opinions, assumptions or estimates for example only, and they may not represent current or future performance of the property. You and your tax and legal advisors should conduct your own investigation of the property and transaction.



SUITE 504



SIZE: ± 3,054 SF



RATE: \$2.25 /SF



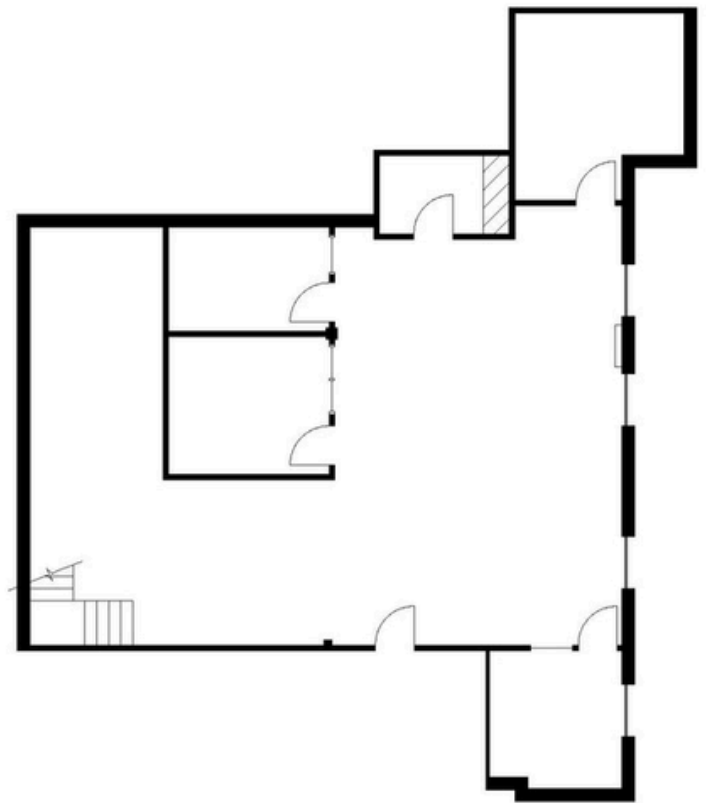
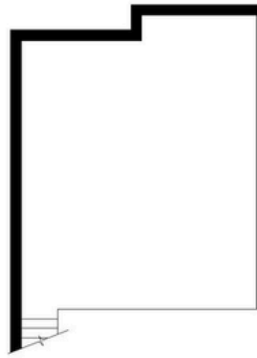
SUITE FEATURES:

Full kitchen

4 private offices

Loft with large skylight

MEZZANINE:



We obtained the information above from sources we believe to be reliable. However, we have not verified its accuracy and make no guarantee, warranty or representation about it. It is submitted subject to the possibility of errors, omissions, change of price, rental or other conditions, prior sale, lease or financing or withdrawal without notice. We include projections, opinions, assumptions or estimates for example only, and they may not represent current or future performance of the property. You and your tax and legal advisors should conduct your own investigation of the property and transaction.

