



HISTORIC BRUNSWIG BUILDING
363 FIFTH AVE | SAN DIEGO | CA 92101

CREATIVE
OFFICES SPACES
FOR LEASE

AVAILABILITY SUMMARY

SUITE	SF	RATE	NOTES
200	9,842 SF	\$2.25 PSF + ELEC & JAN	8 Private offices Conference Room Mezzanine Open work area
203	795 SF	\$2.25 PSF + ELEC & JAN	Open area with loft
300	6,406 SF	\$2.25 PSF + ELEC & JAN	Open floor plan Private office Conference room Full kitchen
301	393 SF	\$2.25 PSF + ELEC & JAN	Reception/non-private area
302	1,860 SF	\$2.25 PSF + ELEC & JAN	Mostly open floor plan Conference room Kitchen

A total of 19,296 SF is available
Call brokers for more information on configuration

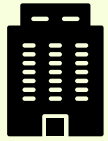


STROM COMMERCIAL

BRUNSWIG BUILDING

363 5TH AVENUE | 92101

PROPERTY OVERVIEW



Creative office suites feature high ceilings, exposed brick and beams, abundant natural lighting



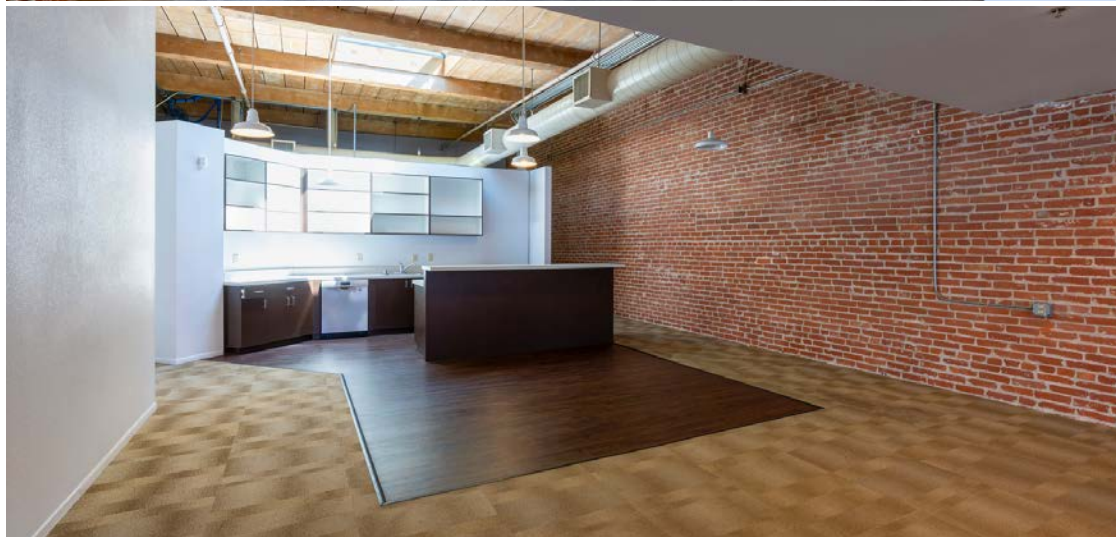
Parking available in nearby structures



Located on the corner of 5th Avenue and J Street in the historic Gaslamp District of Downtown San Diego

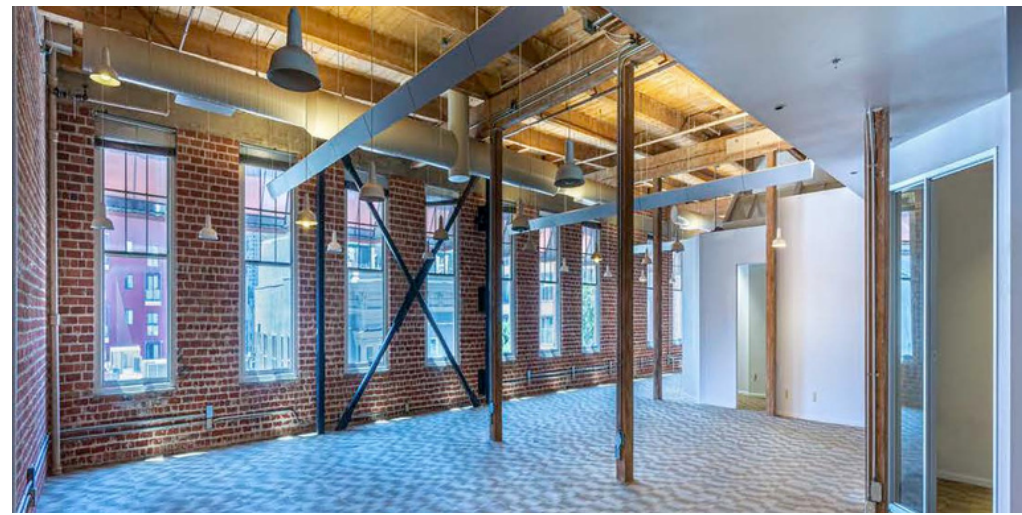


Surrounded by countless walkable amenities; Only 2 blocks from the Convention Center and Petco Park



BUILT-IN 1890 & RENOVATED 2014

BE A PART OF SAN DIEGO HISTORY



BRUNSWIG BUILDING

363 5TH AVENUE | 92101

LOCATION SUMMARY

The Historic Brunswig Building is ideally positioned in the heart of Downtown San Diego's most prominent attractions. Located in the Gaslamp District, the building is just steps from the center of Downtown nightlife, and only blocks from the Petco Park and waterfront amenities, such as Seaport Village and The Rady Band Shell.



Access to Gaslamp Quarter restaurants, cafes and nightlife



Only blocks from Petco Park and East Village venues



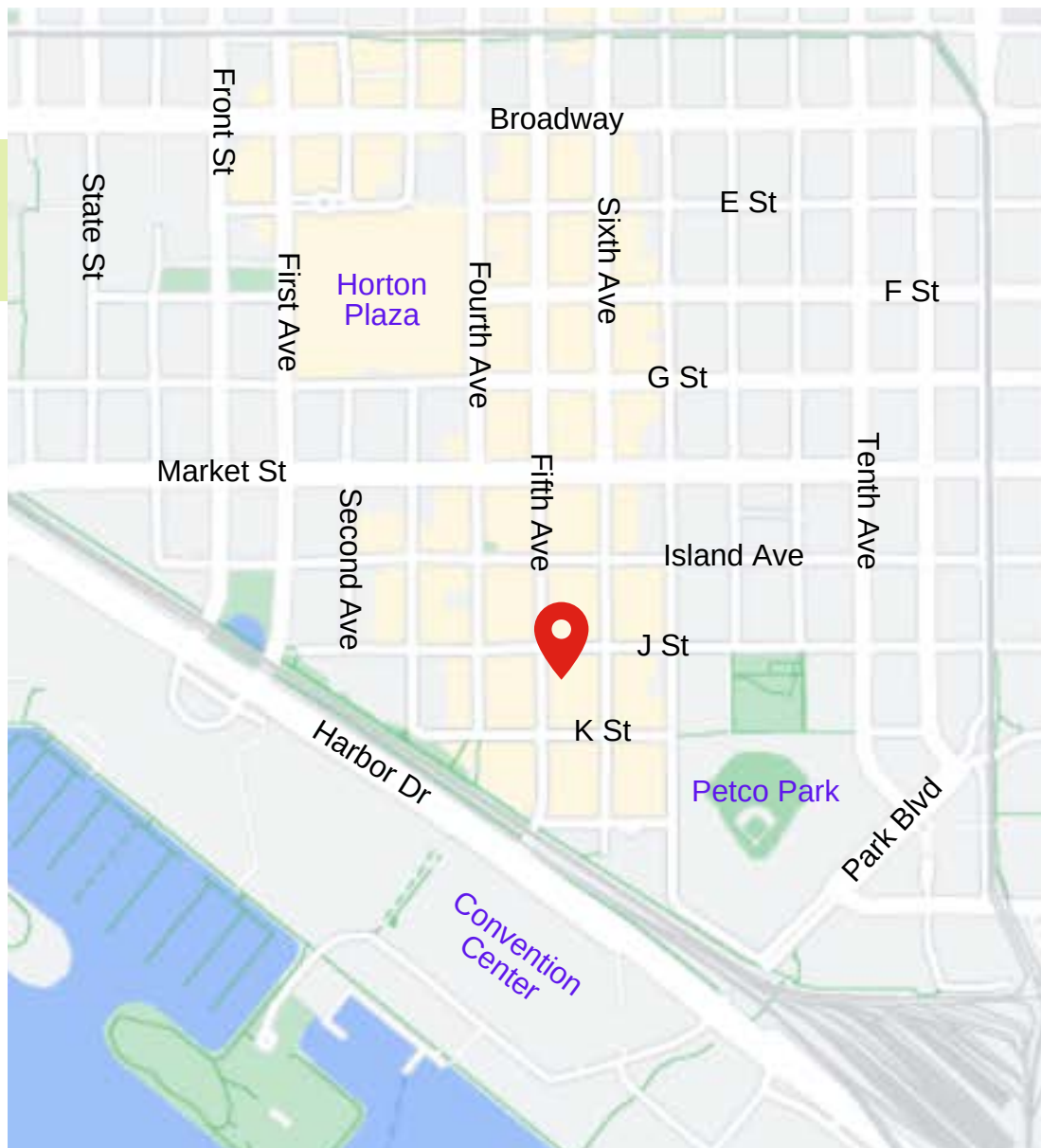
Walking distance to the waterfront, Seaport Village the Convention Center, and the Rady Bandshell



Easily accessible by all major freeways and public transportation



Just 7 minutes to San Diego International Airport



CONTACT:

Hans Strom | LIC#01222709
Hans@stromcommercial.com

Jack Schreibman | LIC#02172891
Jschreibman@stromcommercial.com

