

# 550 CEDAR STREET

San Diego, CA 92101  
Southwest Corner of Cedar St & 5th Ave

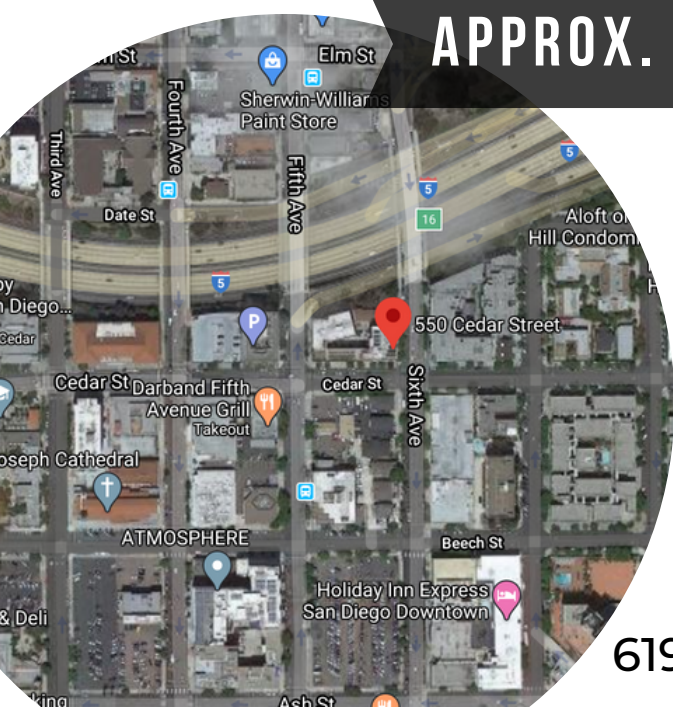


RETAIL/OFFICE SPACE FOR LEASE



STROM | COMMERCIAL

APPROX. 1,600 SF | RATE: \$2.50/SF + NNN



- Newly constructed ground floor retail/office space available
- Highly visible location, situated on the corner of 5th Avenue and Cedar Street

619.243.1244 | [www.stromcommercial.com](http://www.stromcommercial.com)



# 550 CEDAR STREET

DOWNTOWN SAN DIEGO  
OFFICE/RETAIL SPACE



STROM COMMERCIAL

**APPROX. 1,600 SF AVAILABLE | RATE: \$2.50/SF + NNN**

## 550 CEDAR STREET FEATURES



50 foot glass window frontage



Concrete flooring, exposed HVAC, and large refrigerator included



Prime signage along 5th Avenue



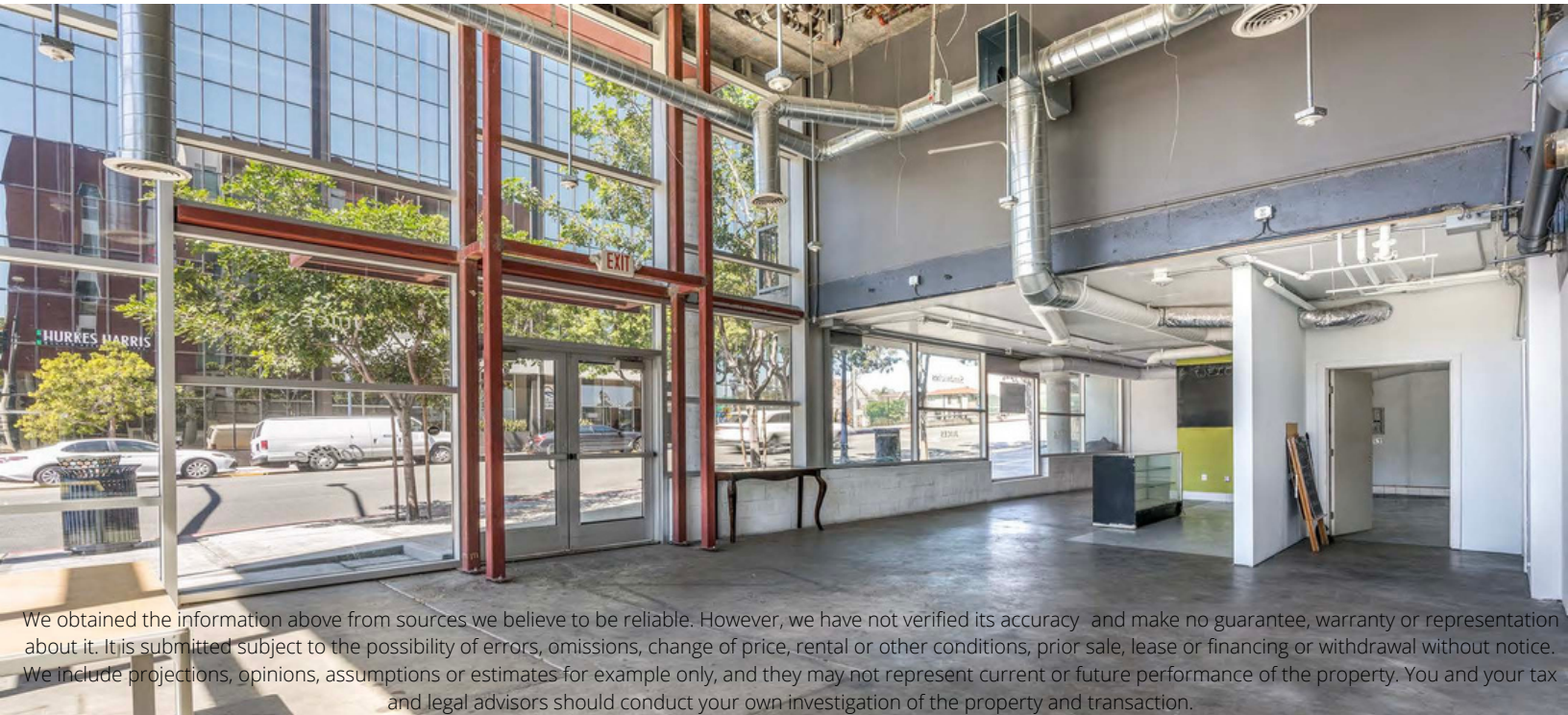
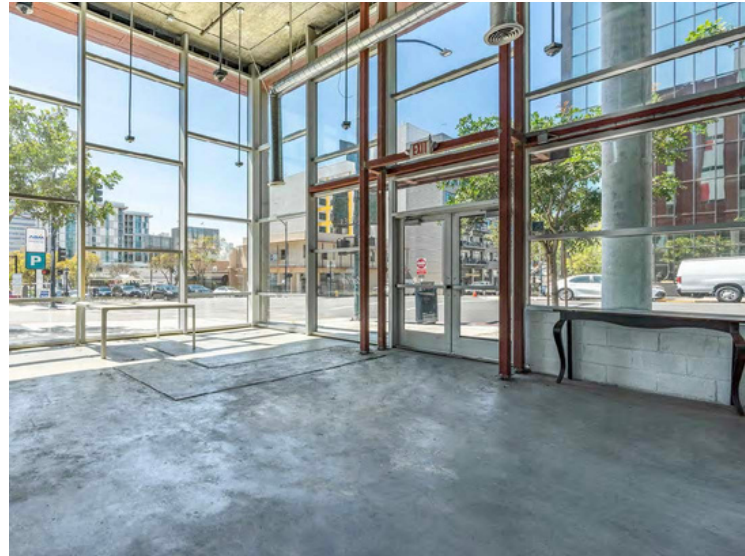
Surrounding tenants include Cal Western School of Law and Family Courthouse



Adjacent to Core Business District and steady daytime population to nearby 100,000 people



Approx. 26 paid public parking spaces onsite



We obtained the information above from sources we believe to be reliable. However, we have not verified its accuracy and make no guarantee, warranty or representation about it. It is submitted subject to the possibility of errors, omissions, change of price, rental or other conditions, prior sale, lease or financing or withdrawal without notice. We include projections, opinions, assumptions or estimates for example only, and they may not represent current or future performance of the property. You and your tax and legal advisors should conduct your own investigation of the property and transaction.

CONTACT | Joe Virgilio | Lic. # 01879307

Strom Commercial | Office: (619) 243-1244 | www.stromcommercial.com | DRE#01222709



# 550 CEDAR STREET

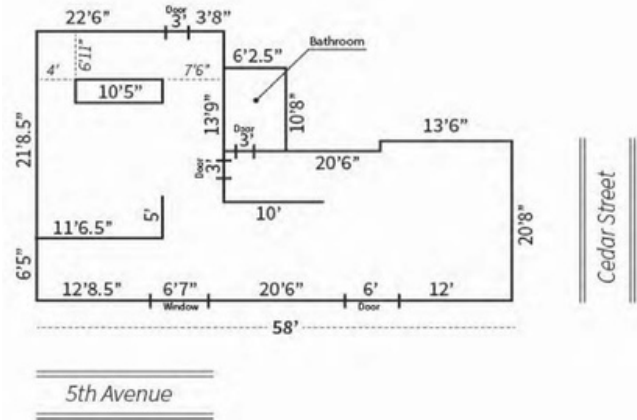
DOWNTOWN SAN DIEGO  
OFFICE/RETAIL SPACE



APPROX. 1,600 SF | RATE: \$2.50/SF + NNN



Cedar Gateway



CONTACT | Joe Virgilio | Lic. # 01879307

Strom Commercial | Office: (619) 243-1244 | www.stromcommercial.com | DRE#01222709