

# BARRIOHAUS

1620 NATIONAL AVENUE SAN DIEGO, CA 92113



## FOR LEASE



STROM | COMMERCIAL

### Barrio Logan Restaurant/Commercial Kitchen Space

Size: 3,240 SF + 700 SF Bonus Patio

Rate: \$2.10/ SF + NNN\*

\*(NNN estimated to be \$0.45/ SF)

## PROPERTY HIGHLIGHTS

- Commercial Kitchen/Restaurant Space available
- Highest and best uses include: Commercial Kitchen, Event Space, Catering Kitchen, Neighborhood Restaurant
- Space features: Indoor seating area w/ skylight, Large kitchen, Walk-in cooler, Rear delivery/load area, Dry storage, Office area, Private restroom, and Access to common area restrooms
- Bonus: Gated 700 SF private patio at no additional cost
- Onsite reserved parking available at market rates

Jordan Williams- Lic. No. 01717714  
Jordan@stromcommercial.com

Hans Strom- Lic. No. 01222709  
Hans@stromcommercial.com

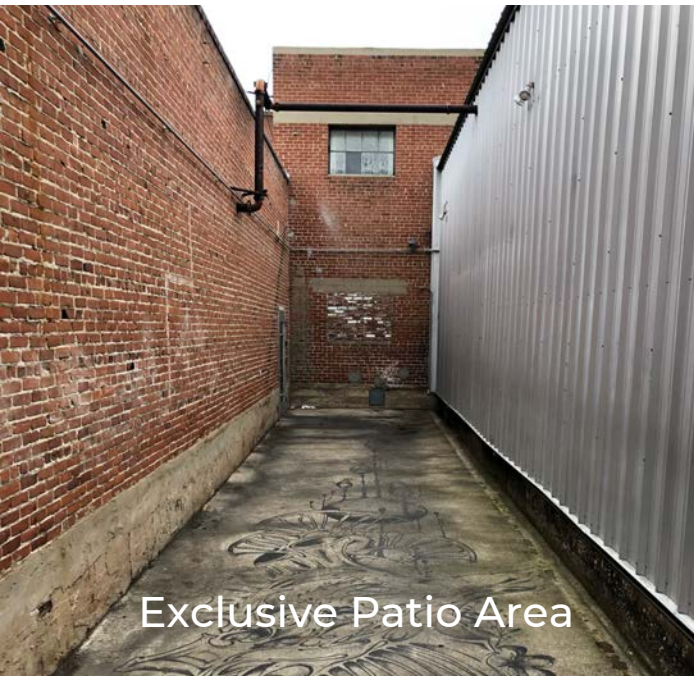
Jack Kirk- Lic. No. 01905664  
Jack@stromcommercial.com

Office: (619) 243-1244  
www.stromcommercial.com

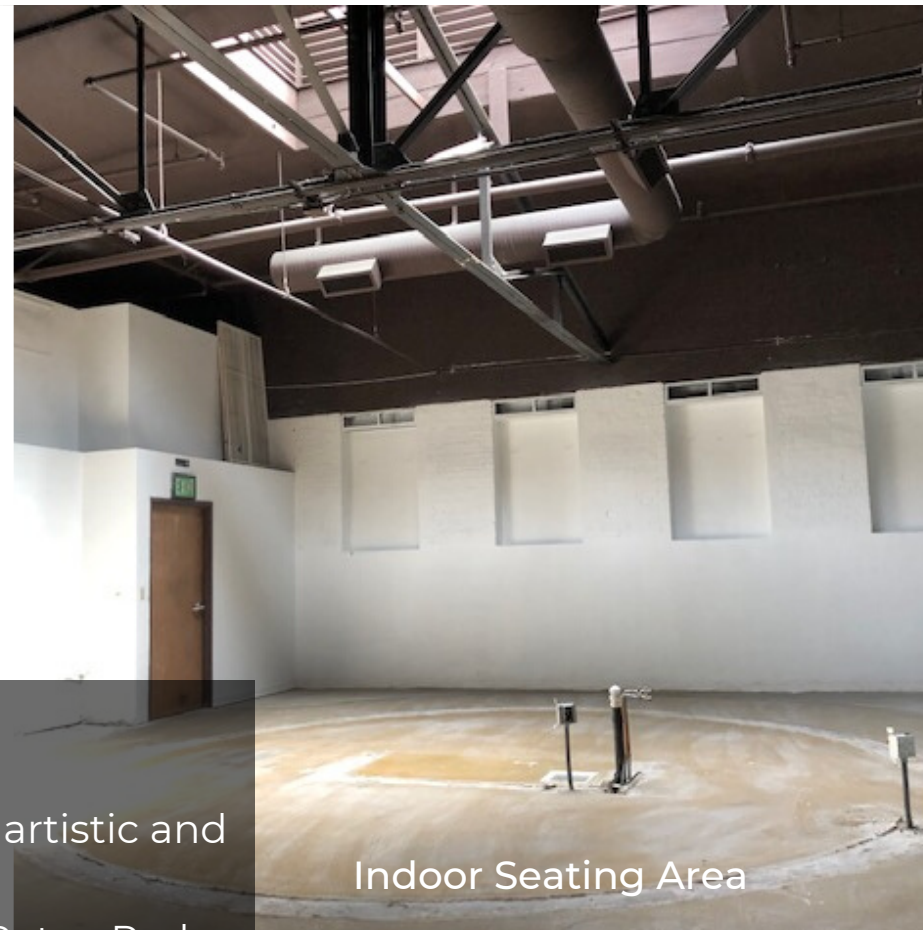
# FOR LEASE |

# 1620 NATIONAL AVENUE

(619)243-1244



Exclusive Patio Area



Indoor Seating Area

## LOCATION

- Located in the well-established artistic and industrial Barrio Logan District
- Close proximity to Downtown, Petco Park, 5 Freeway
- Neighboring tenants include: Cafe Virtuoso, Thorn Brewing Co., Mish Mash, and more



We obtained the information above from sources we believe to be reliable. However, we have not verified its accuracy and make no guarantee, warranty or representation about it. It is submitted subject to the possibility of errors, omissions, change of price, rental or other conditions, prior sale, lease or financing or withdrawal without notice. We include projections, opinions, assumptions or estimates for example only, and they may not represent current or future performance of the property. You and your tax and legal advisors should conduct your own investigation of the property and transaction.