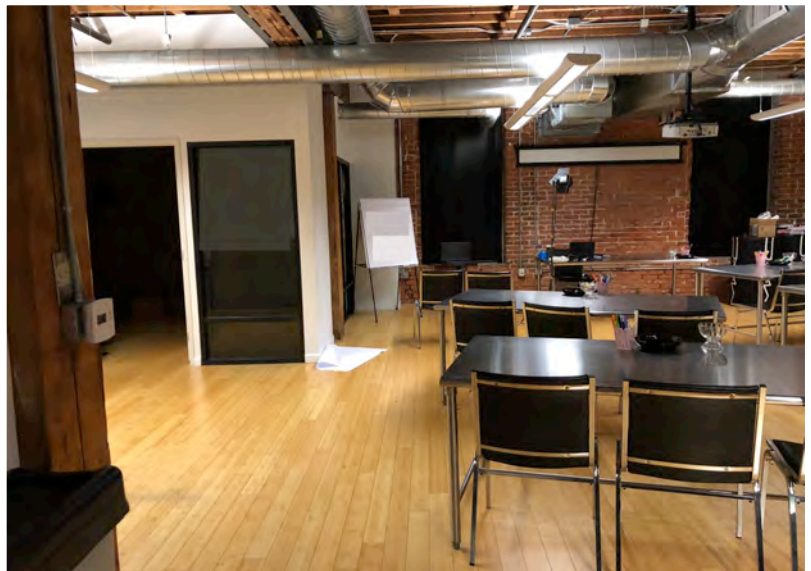
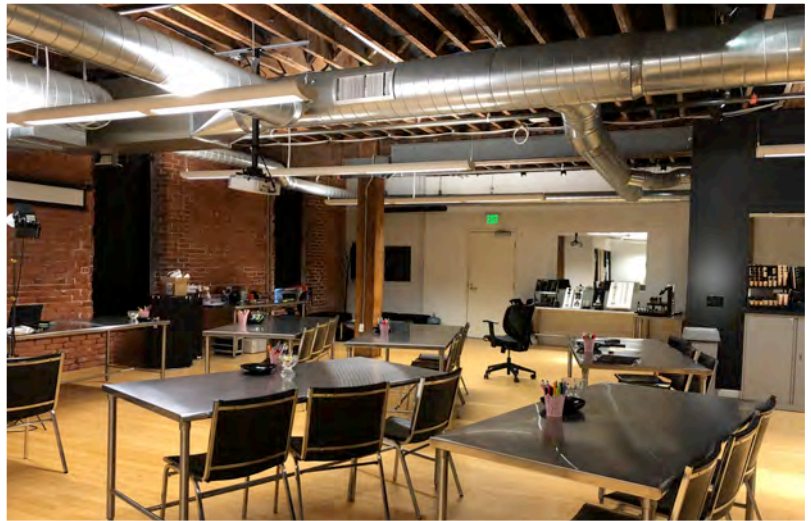


AVAILABLE

Fletcher Office Lofts 624 Broadway, San Diego

CREATIVE OFFICE SPACE Downtown, San Diego

Suite 305 +/- 2,336 SF
\$2.45/SF + Electric



- Creative, open office layout with two private offices
- Wood floors, exposed brick & exposed HVAC
- Daily janitorial service included
- Kitchenette with dishwasher in suite
- Short walk to Petco Park, Gaslamp, and unmatched dining options
- Dedicated, secured 24/7 access
- Garage parking in building available

We obtained the information above from sources we believe to be reliable. However, we have not verified its accuracy and make no guarantee, warranty or representation about it. It is submitted subject to the possibility of errors, omissions, change of price, rental or other conditions, prior sale, lease or financing, or withdrawal without notice. We include projections, opinions, assumptions or estimates for example only, and they may not represent current or future performance of the property. You and your tax and legal advisors should conduct your own investigation of the property and transaction.



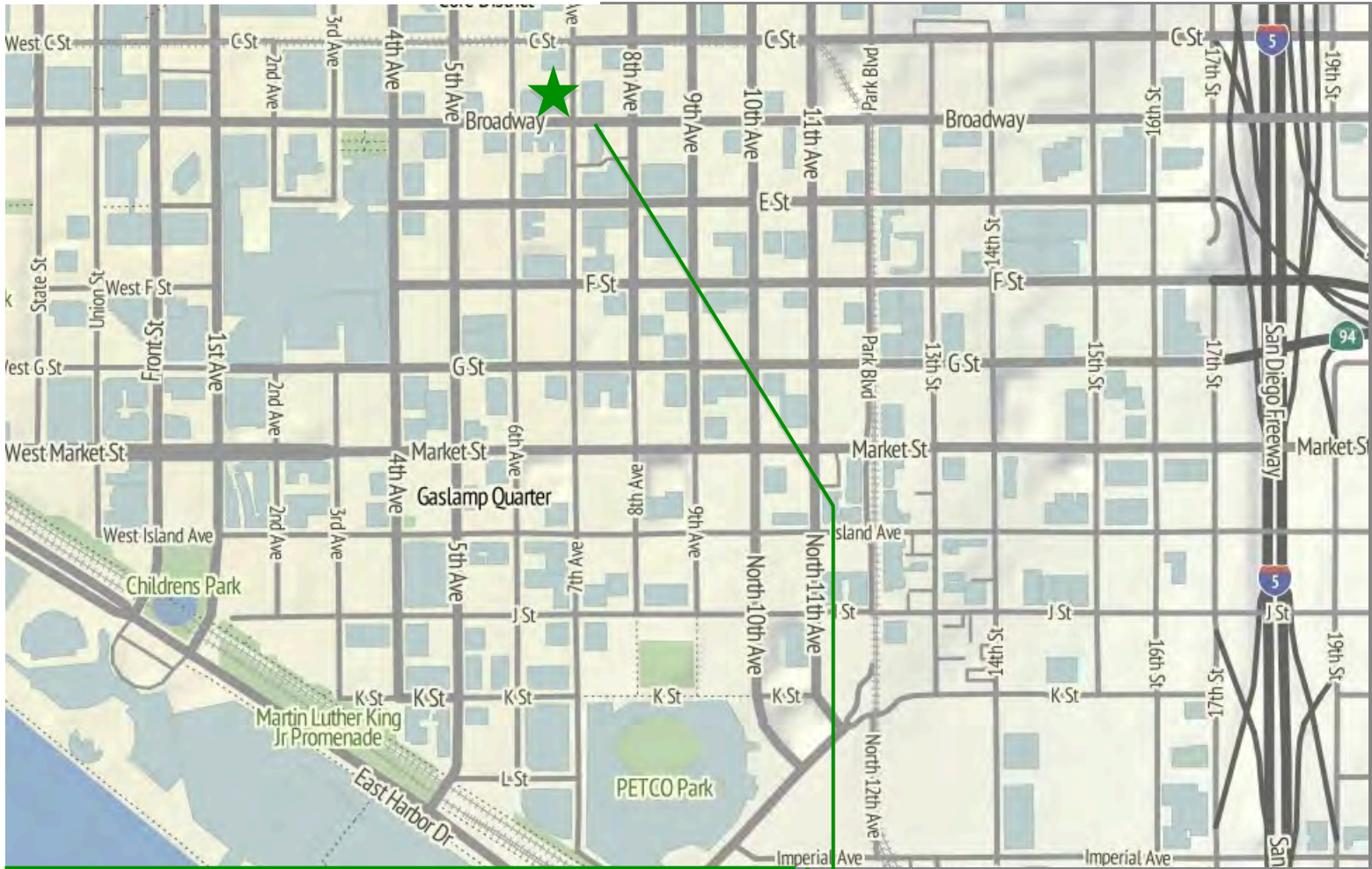
STROM | COMMERCIAL

JORDAN WILLIAMS LIC#01717714 | jordan@stromcommercial.com

MIKE MORGAN LIC#00988519 | mike@stromcommercial.com

(619) 243-1244 | www.stromcommercial.com

LOCATION



624 Broadway, San Diego, California

- Located the historic Colonel Fletcher Building
- Upscale microbrewery/ restaurant located on ground floor
- 2 Blocks away from Horton Plaza
- Hotels, restaurants, cafes and banks all walking distance
- Near bus stops and trolley stop



STROM COMMERCIAL