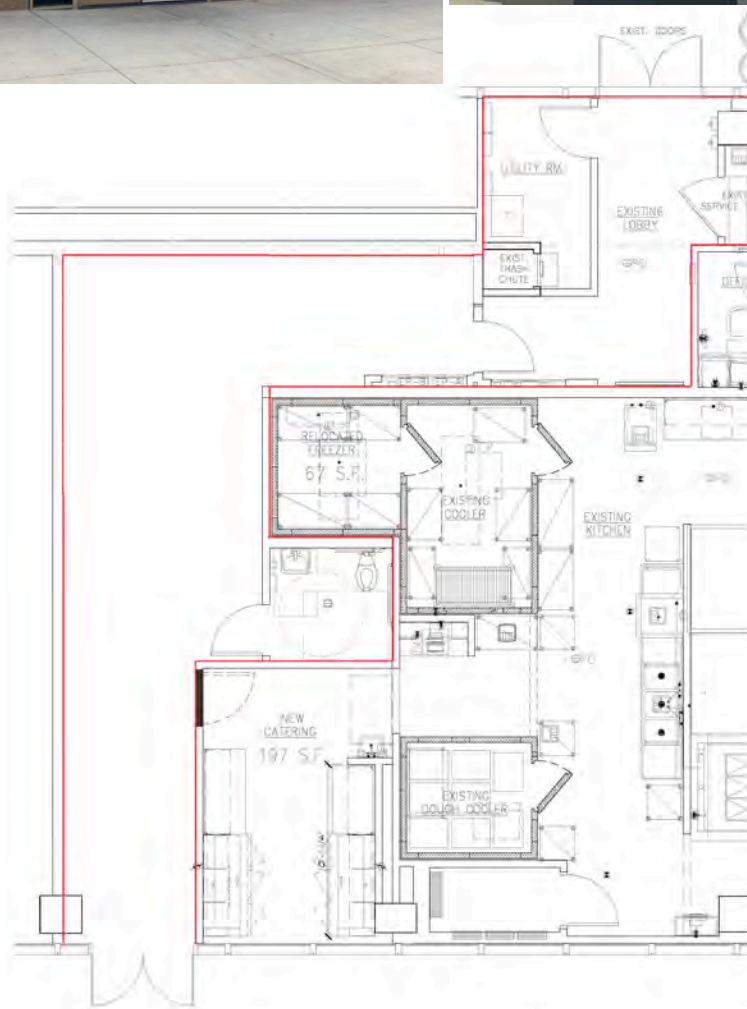


225 BROADWAY - DOWNTOWN

+/- 890 SF

225 Broadway
Suite 130
San Diego, CA
92101

DOWNTOWN RETAIL/OFFICE



Highlights

Size: +/- 890 SF

- Central Downtown location
- Prime signage
- Great usage for retail or office
- Sublease expires 3/31/2026
- Price upon request

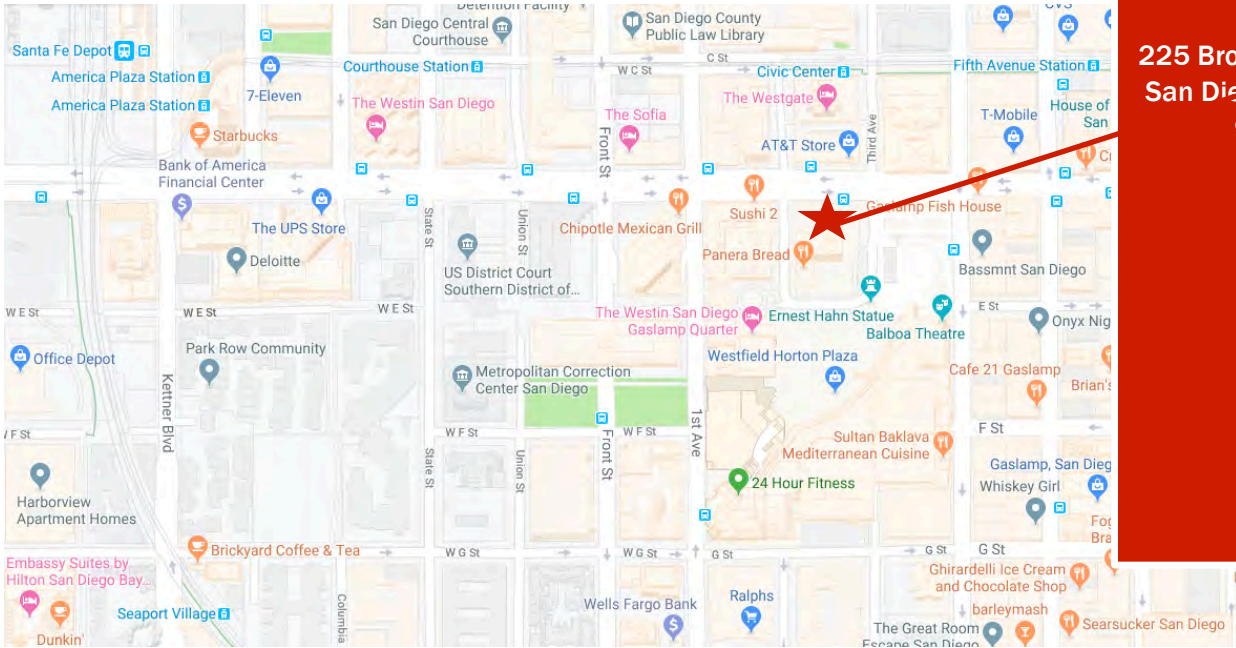
Joe Virgilio lic#01879307
joe@stromcommercial.com



STROM COMMERCIAL

www.stromcommercial.com | 619.243.1244

Location:
225 Broadway
San Diego, CA
92101



225 Broadway, Suite 130, San Diego, CA 92101

- Located on the ground floor of San Diego's premier 22-story vertical campus – 225 Broadway
- Walk to Westfield Horton Plaza, Horton Plaza Park and Courts
- Near Historic Gaslamp Quarter, Petco Park and Waterfront
- Neighboring restaurants, bars, bus lines, and entertainment
- On site property manager

