

225 BROADWAY, SUITE 130

SAN DIEGO, CA | 92101



FOR SUBLEASE



STROM | COMMERCIAL

Downtown Retail/Office Space

890 Square Feet- Price Available Upon Request

Sublease Expires: 3/31/2026

PROPERTY HIGHLIGHTS

- Located on the ground floor of 225 Broadway- San Diego's premier 22-story vertical campus
- Near the Historic Gaslamp Quarter, Petco Park and Waterfront
- Neighboring restaurants, bars, bus-lines and entertainment
- Walk to Westfield Horton Plaza, Horton Plaza Park and Courts
- Onsite property manager

Joe Virgilio- Lic. No. 01879307
Joe@stromcommercial.com

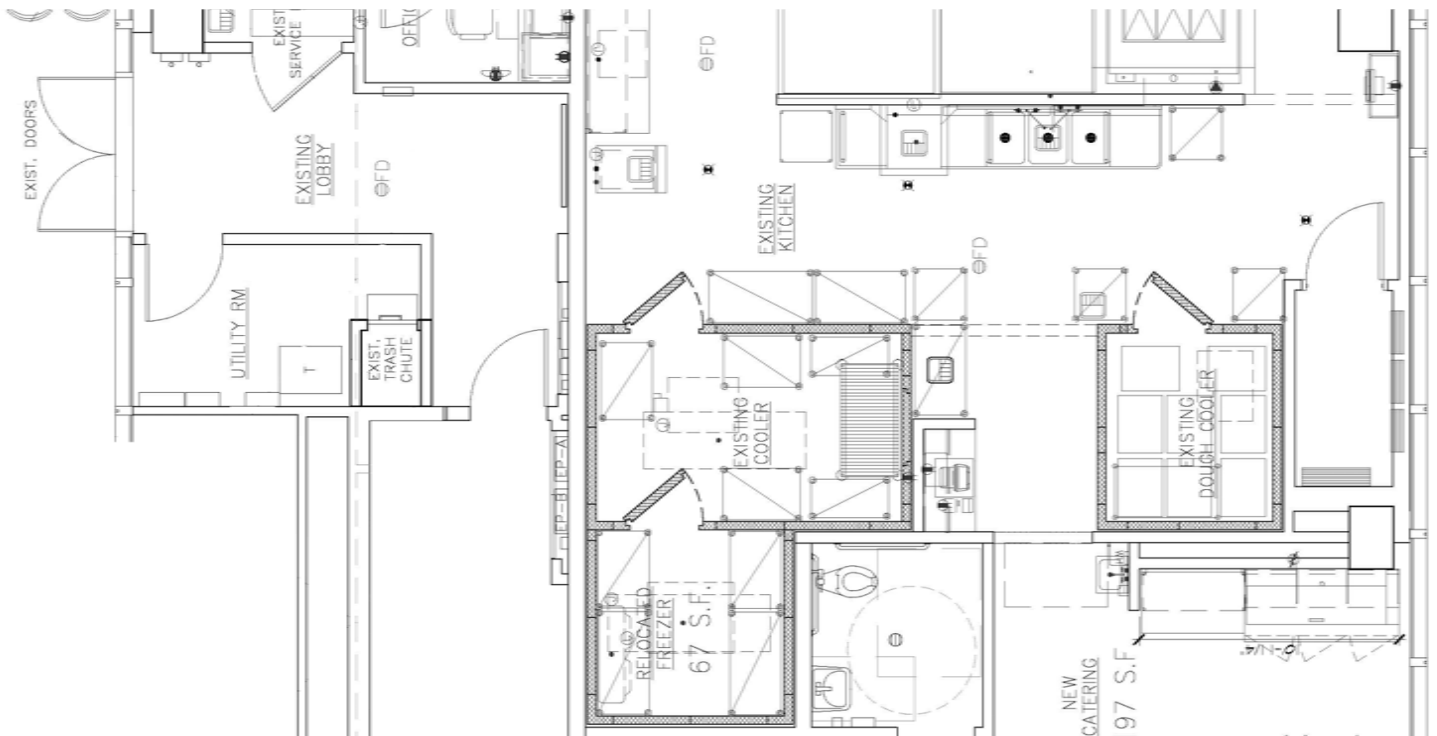
Office: (619) 243-1244
www.stromcommercial.com

FOR SUBLEASE |

225 BROADWAY, STE 130

www.stromcommercial.com

(619) 243-1244



We obtained the information above from sources we believe to be reliable. However, we have not verified its accuracy and make no guarantee, warranty or representation about it. It is submitted subject to the possibility of errors, omissions, change of price, rental or other conditions, prior sale, lease or financing or withdrawal without notice. We include projections, opinions, assumptions or estimates for example only, and they may not represent current or future performance of the property. You and your tax and legal advisors should conduct your own investigation of the property and transaction.